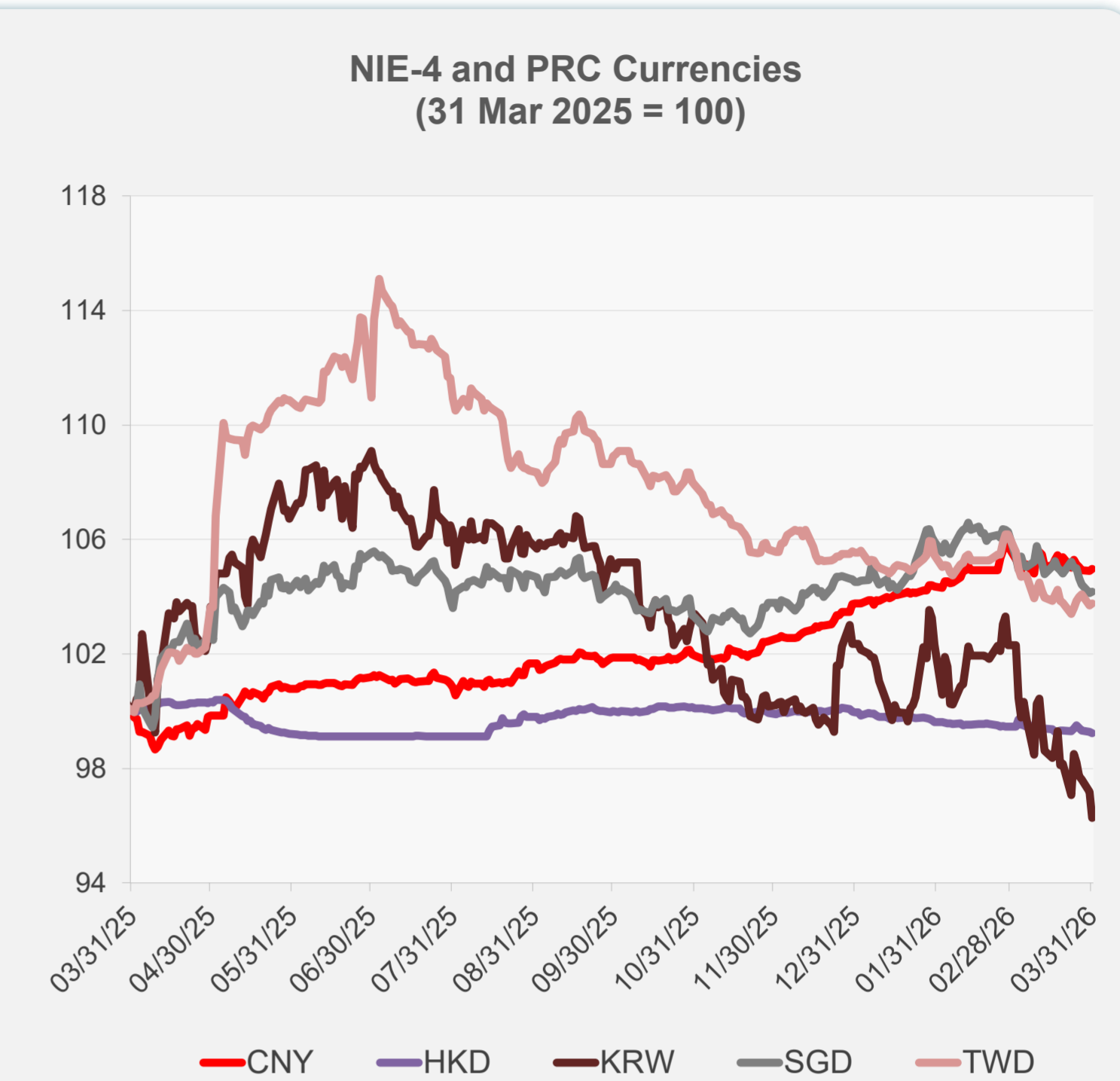
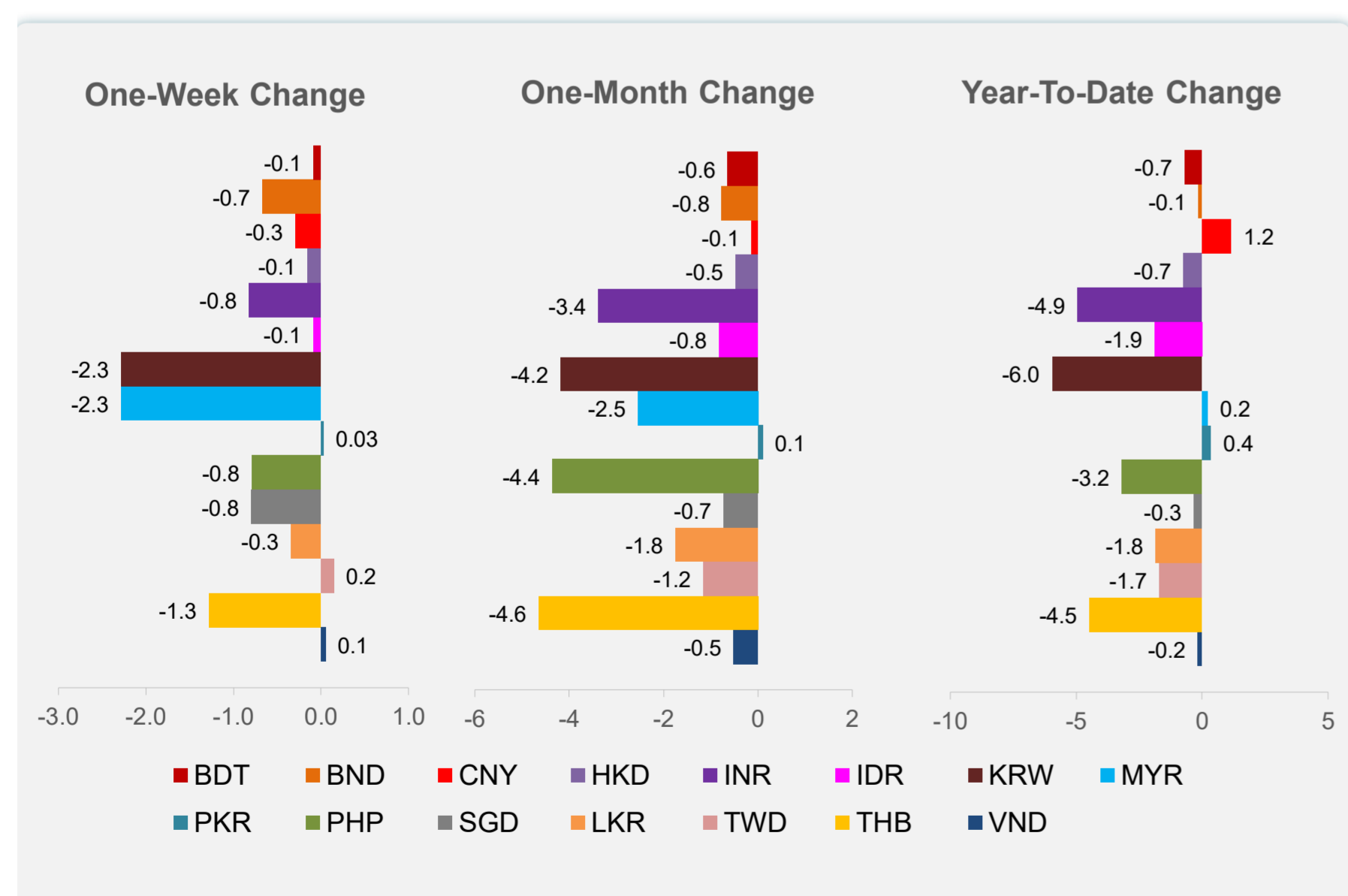
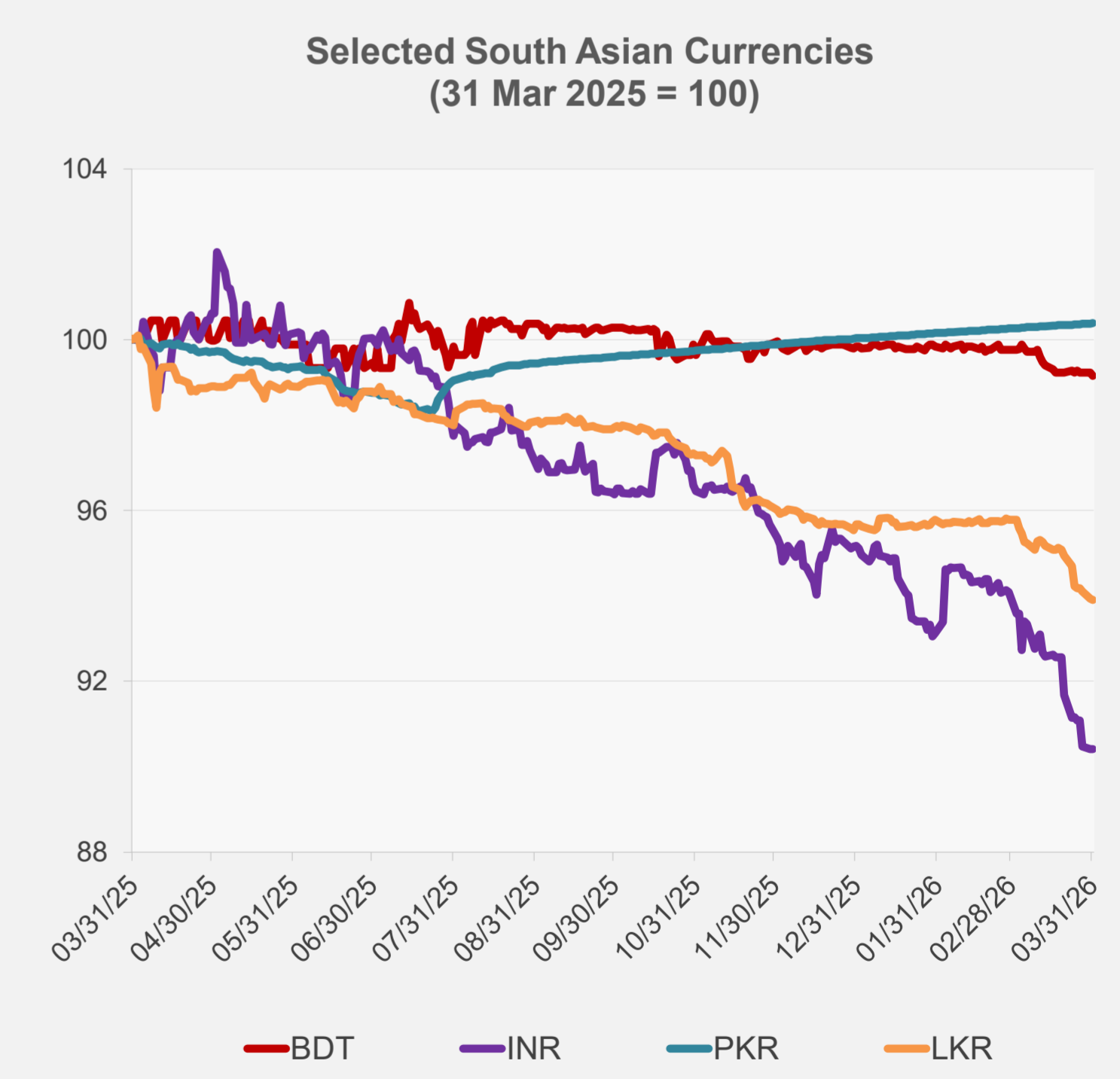
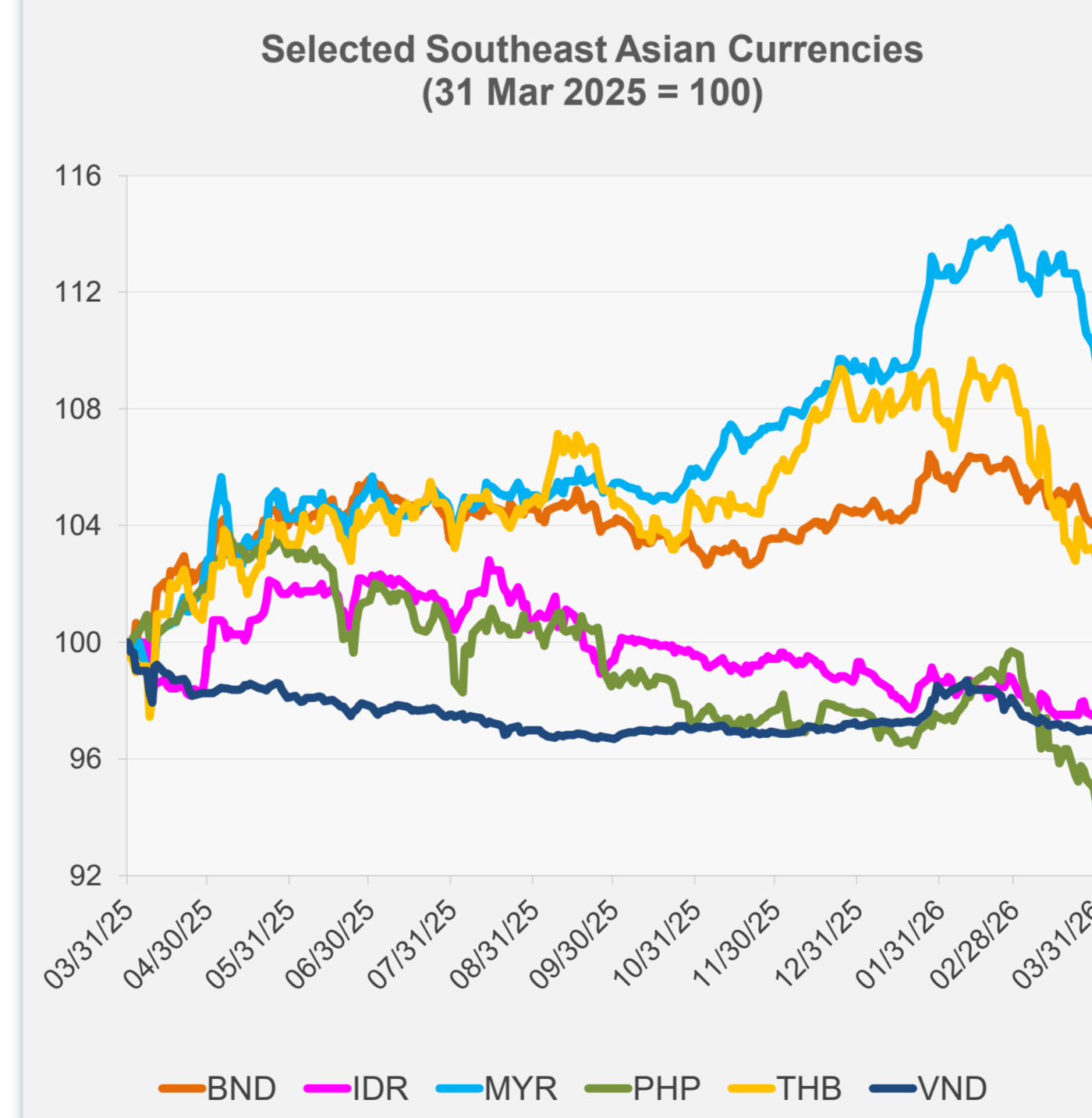


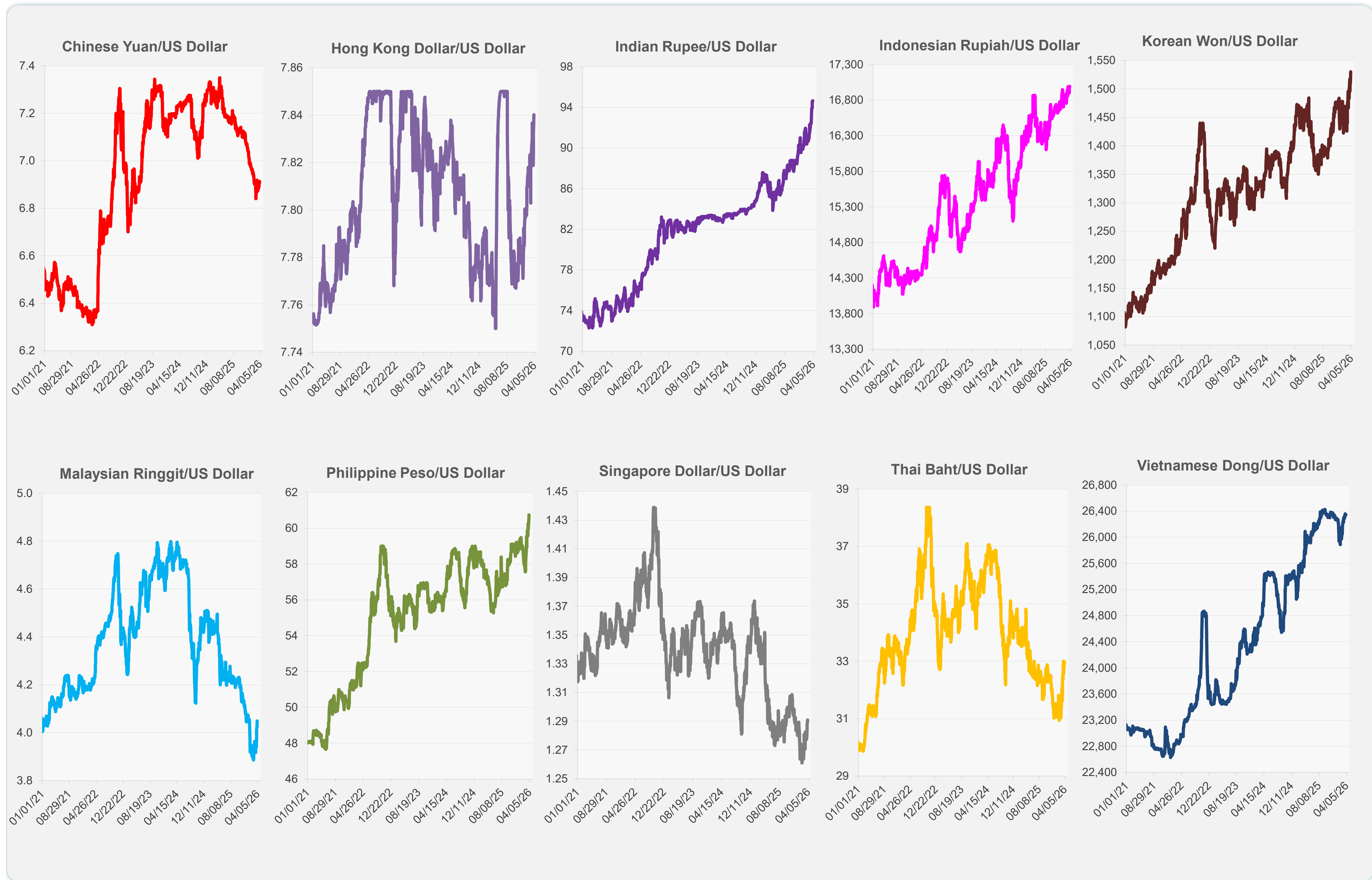
	Latest Closing	% change from Previous Day	% change from 01-Jan-26
Euro	0.87	0.49	-1.89
Japanese yen (JPY)	159.63	0.09	-2.29
Bangladeshi taka (BDT)	123.10	-0.08	-0.69
Brunei dollar (BND)	1.29	0.33	-0.14
Chinese yuan (CNY)	6.91	0.07	1.16
Hong Kong dollar (HKD)	7.84	-0.05	-0.72
Indian rupee (INR)	94.65	0.00	-4.94
Indonesian rupiah (IDR)	16,994.50	-0.03	-1.88
Korean won (KRW)	1,530.10	-0.94	-5.95
Malaysian ringgit (MYR)	4.05	-0.52	0.22
Pakistan rupee (PKR)	279.12	0.01	0.35
Philippine peso (PHP)	60.74	-0.58	-3.19
Singapore dollar (SGD)	1.29	0.05	-0.32
Sri Lanka rupee (LKR)	315.40	-0.03	-1.84
Taipei,China NT dollar (TWD)	31.98	0.05	-1.69
Thai baht (THB)	32.98	-0.39	-4.47
Vietnamese dong (VND)	26,342.50	0.01	-0.16



NIE = Newly Industrialized Economies



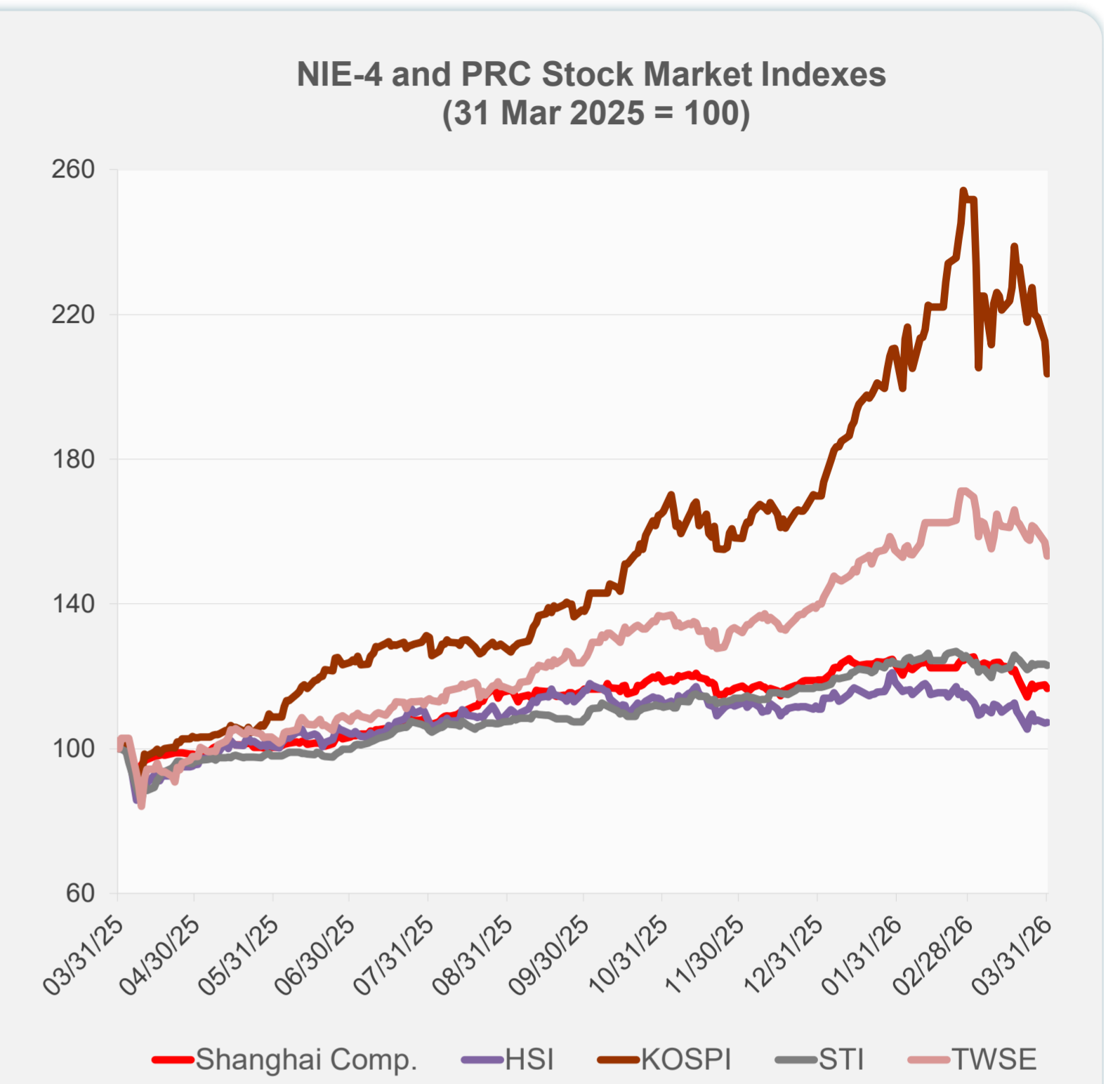
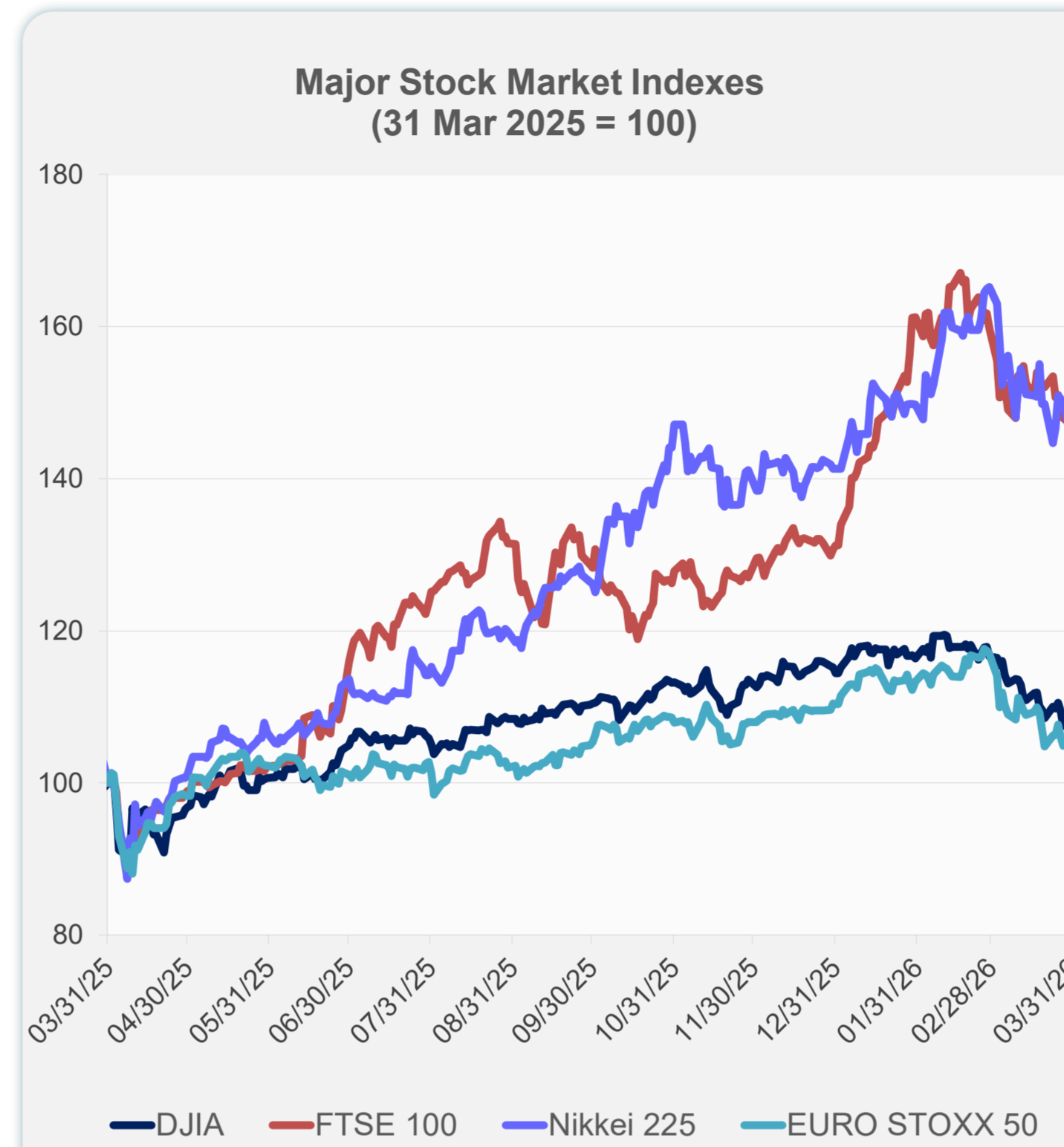
Note: Negative/Decreasing values indicate depreciation of local currency, and positive/increasing values indicate appreciation.
Source: ADB calculations using data from Bloomberg and Haver Analytics.



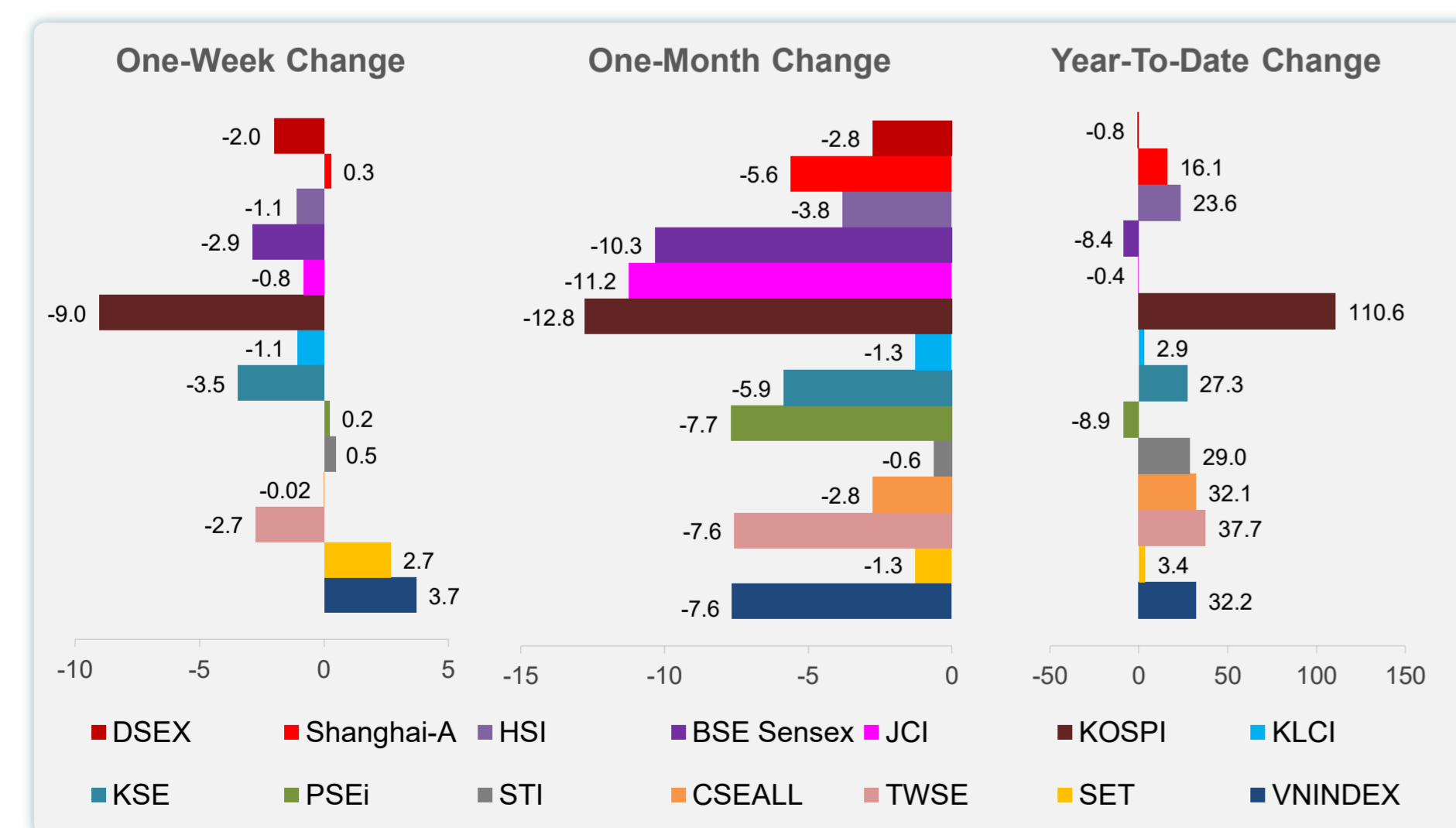
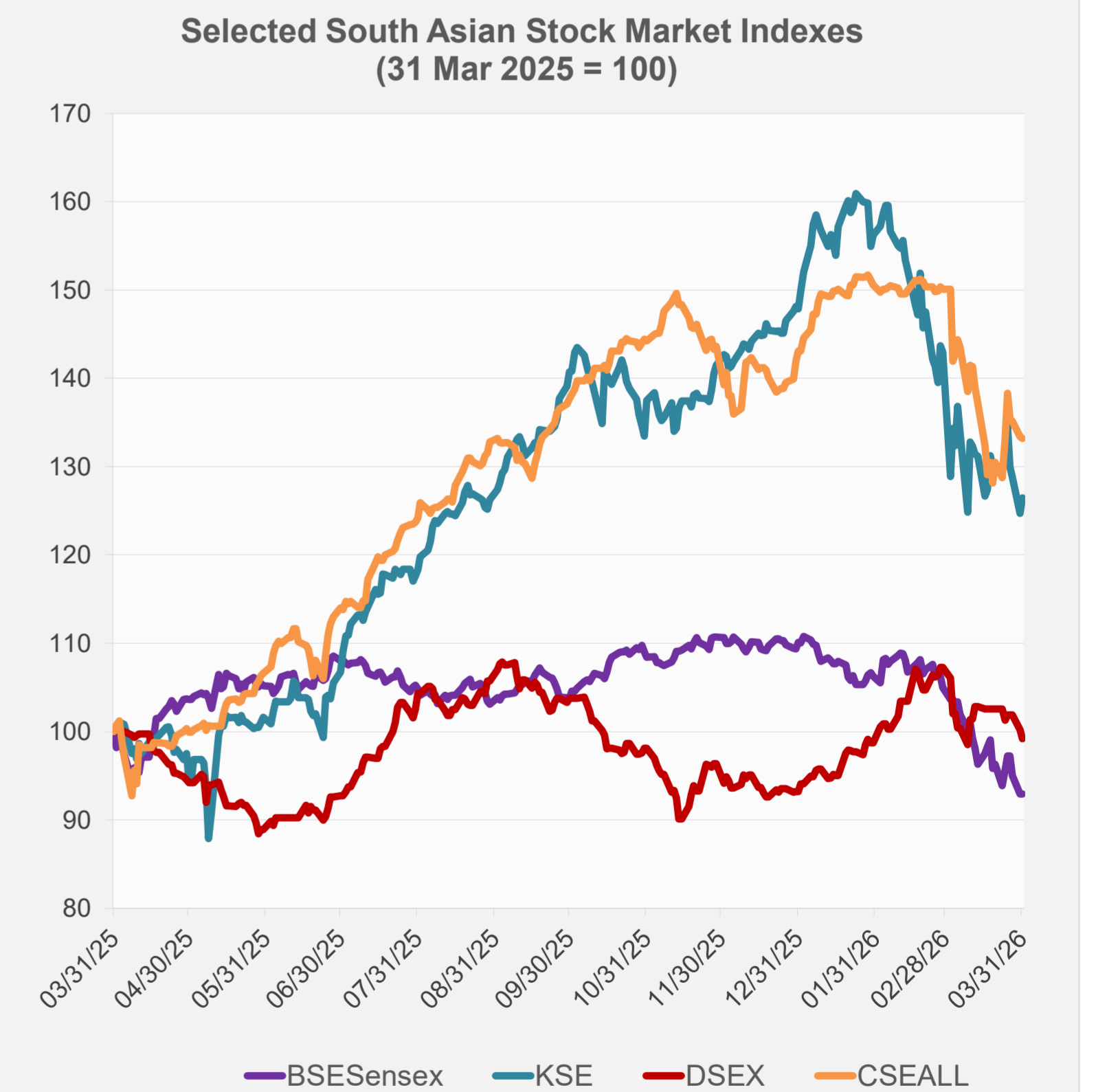
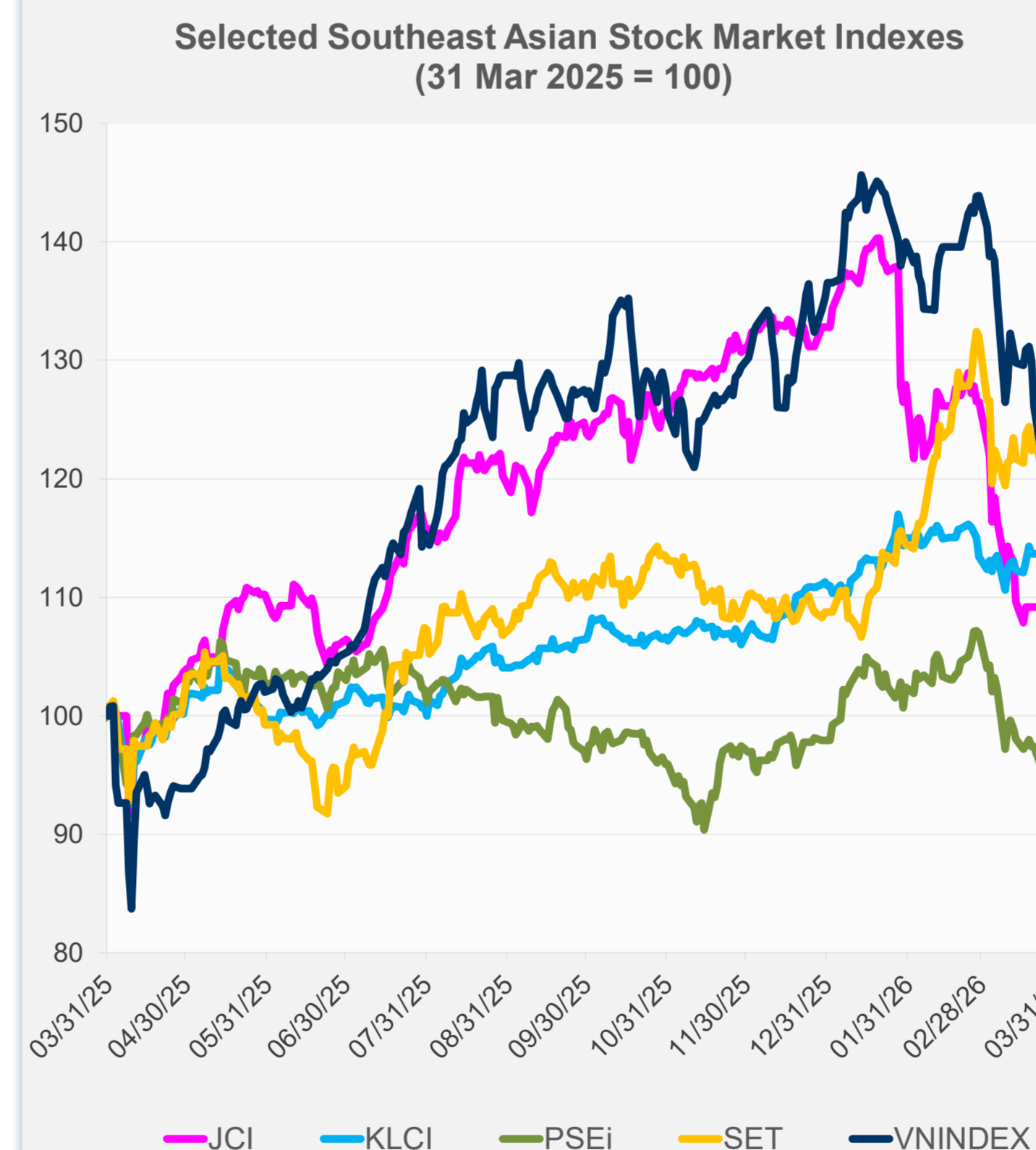
Source: Haver Analytics.

Daily Market Watch
STOCK INDEXES

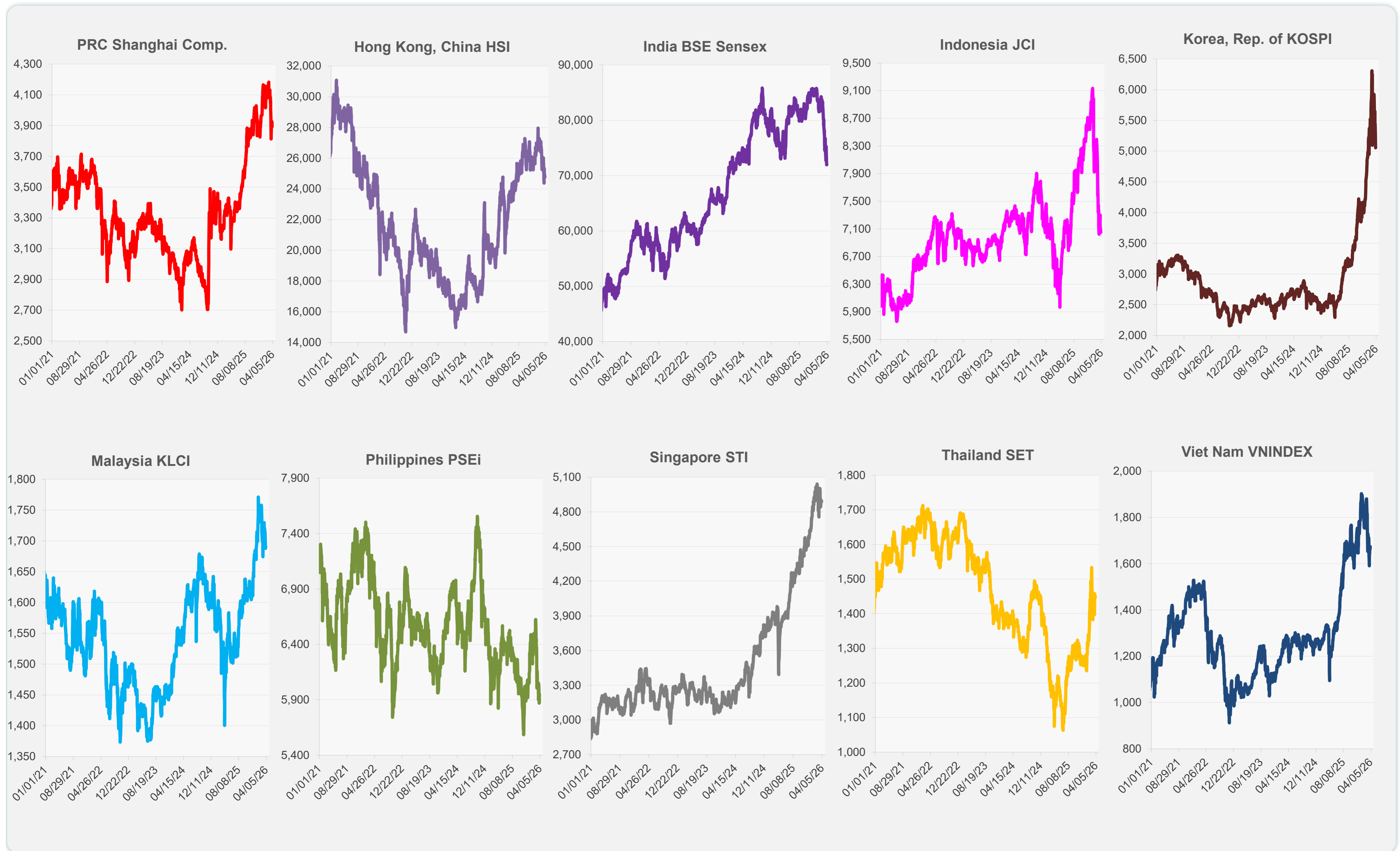
	Latest Closing	% change from Previous Day	% change from 01-Jan-25
US Dow Jones Ind Avg	46,341.51	2.49	8.93
US NASDAQ	21,590.63	3.83	11.81
US S&P 500	6,528.52	2.91	11.00
UK FTSE 100	12,790.98	1.30	56.50
EURO STOXX 50	5,569.73	0.50	13.76
Japan NIKKEI 225	51,063.72	-1.58	28.00
Bangladesh DSEX	5,178.31	-1.00	-0.76
PRC Shanghai Comp.	3,891.86	-0.80	16.11
Hong Kong, China HSI	24,788.14	0.15	23.57
India BSE Sensex	71,947.55	0.00	-8.36
Indonesia JCI	7,048.22	-0.61	-0.45
Korea, Rep. of KOSPI	5,052.46	-4.26	110.56
Malaysia KLCI	1,690.36	0.15	2.92
Pakistan KSE 100	148,943.40	1.40	27.29
Philippines PSEi	5,948.94	1.35	-8.88
Singapore STI	4,885.45	-0.24	28.99
Sri Lanka CSEALL	21,066.18	-0.12	32.12
Taipei, China TWSE	31,722.99	-2.45	37.72
Thailand SET	1,448.14	-0.10	3.42
Viet Nam VNINDEX	1,674.49	0.72	32.18



NIE = Newly Industrialized Economies



Sources: ADB calculations using data from Bloomberg and CEIC Data Company.



Sources: ADB calculations using data from Bloomberg and CEIC Data Company.

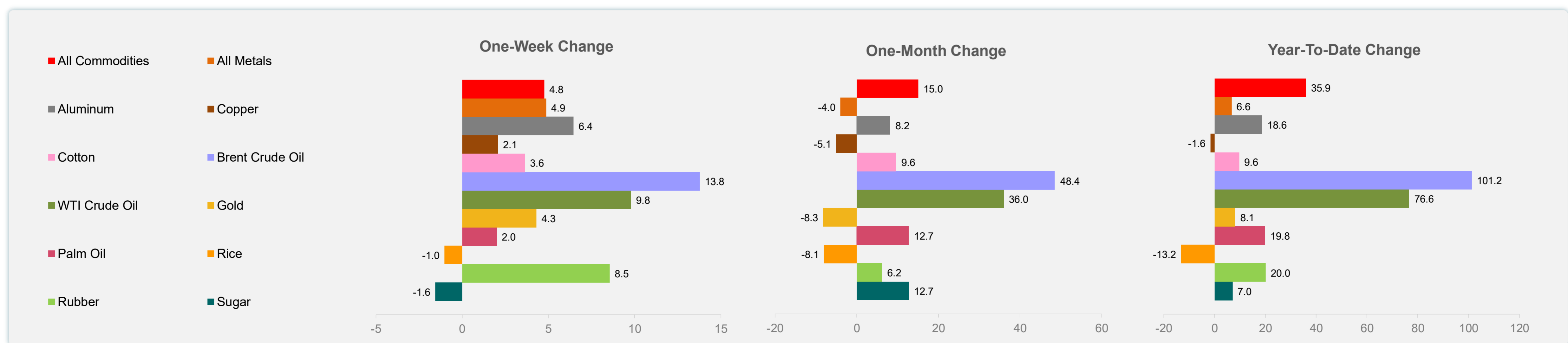
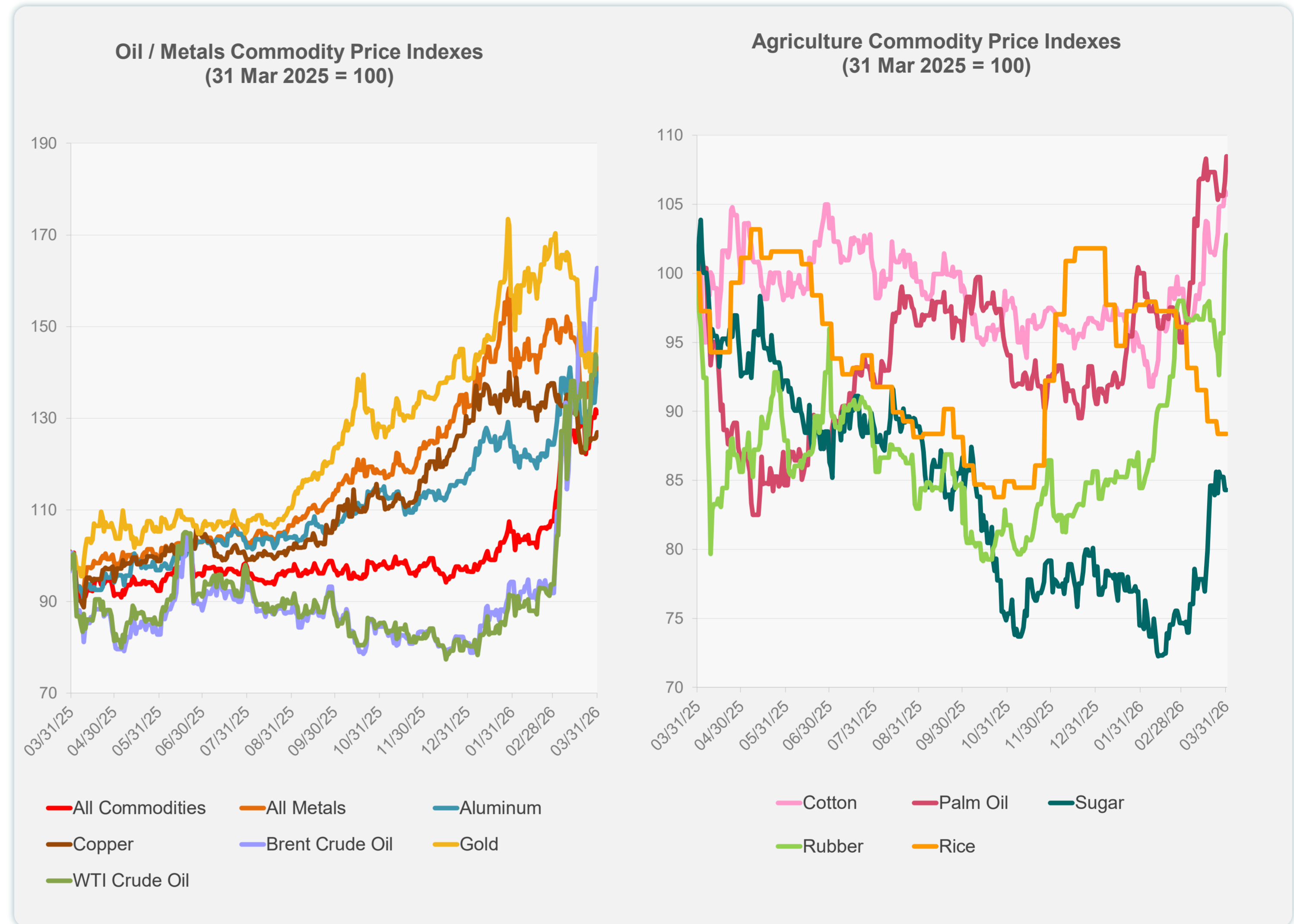
Daily Market Watch
COMMODITY PRICES

1 April 2026, 9:00 AM Manila

	Unit	Latest Closing	% change from Previous Day	% change from 01-Jan-26
S&P All Commodities	US\$	745.18	-0.53	35.85
S&P All Metals	US\$	473.07	2.18	6.61
Aluminum	US\$/metric ton	3,521.15	2.12	18.64
Copper	US\$/metric ton	12,256.76	0.95	-1.58
Cotton	US cents/lb	68.00	-0.28	9.64
Brent Crude Oil	US\$/barrel	125.62	2.15	101.17
WTI Crude Oil	US\$/barrel	101.38	-1.46	76.56
Gold	US\$/troy oz	4,668.06	3.48	8.07
Palm Oil	US\$/metric tonne	1,160.64	1.72	19.82
Rice ¹	US\$/metric ton	387.00	0.00	-13.23
Rubber ²	US\$/kg	258.00	1.18	20.00
Sugar	US cents/lb	15.83	0.00	7.03

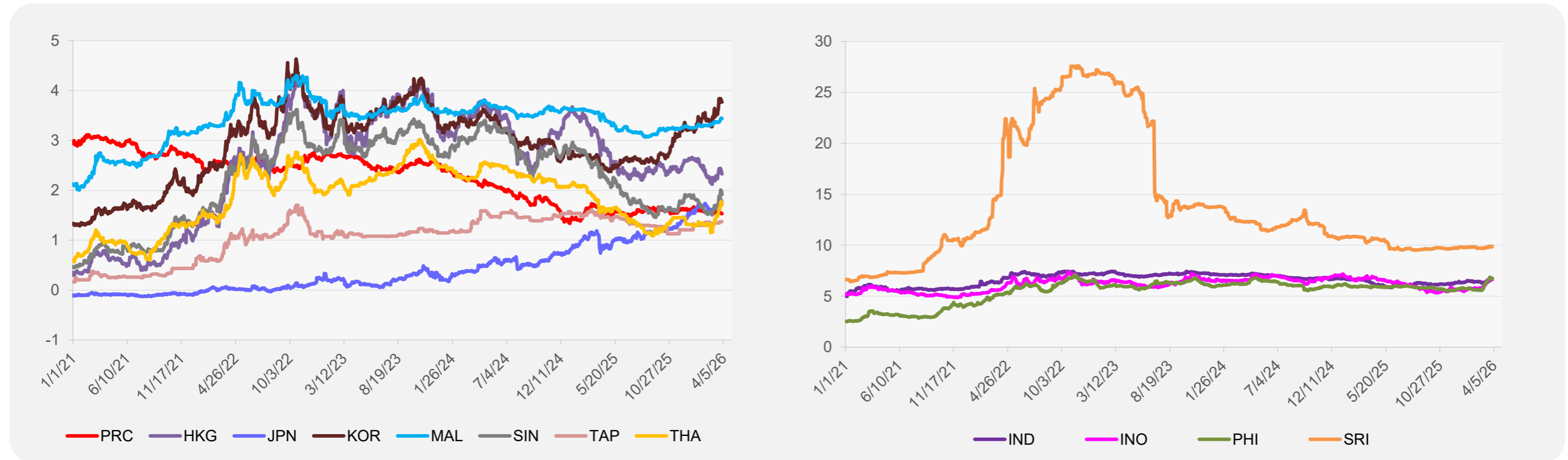
¹ Latest closing price from 25 March 2025.

² Singapore Exchange, Ribbed Smoked Sheet Rubber.

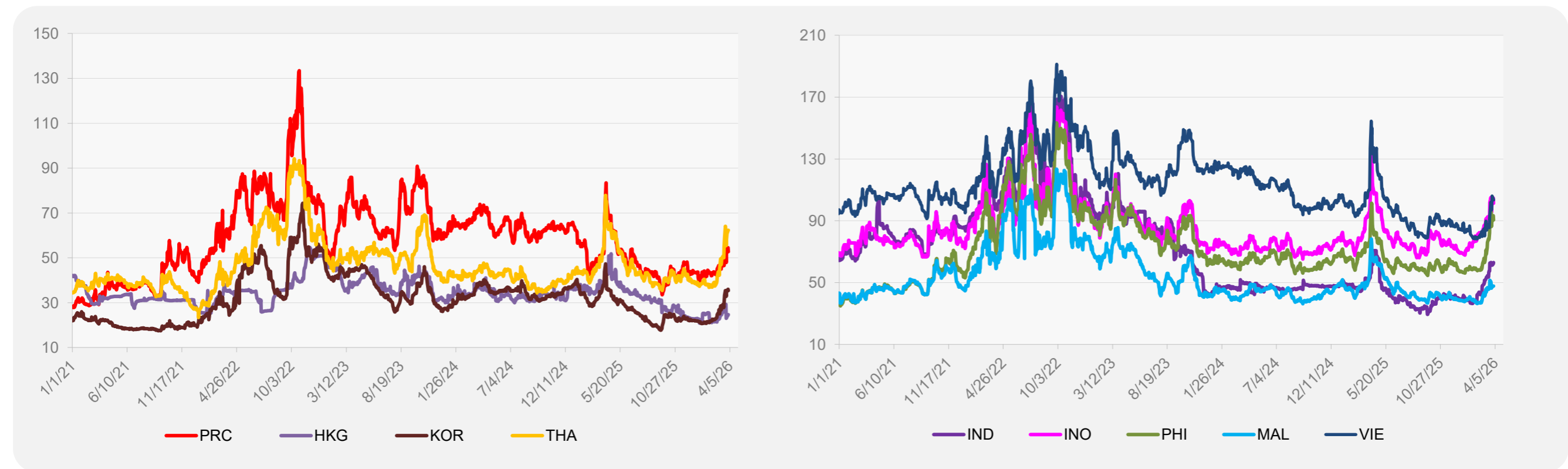


Source: ADB calculations using data from Bloomberg.

5-YEAR LOCAL CURRENCY GOVERNMENT BOND YIELDS (%)



5-YEAR CREDIT DEFAULT SWAP¹



¹ In USD and based on sovereign bonds.
Source: ADB calculations using data from Bloomberg.